

# INVITATION FOR COOPERATION



# TABLE OF CONTENTS

## Local BEST Group Leuven 2013 - 2014

President: Laurens De Smedt

Treasurer: Jean Beelaerts

Secretary: Kimberly Willen

VP Corporate Relations: Tomas Van Pottelbergh

VP Human Resources: Herbert Vloeberghs

VP Public Relations: Hendrik Bostoen

TABLE OF CONTENTS	3
BEST IN A NUTSHELL	4
THE DEAN TALKS	8
TESTIMONIAL	9
EBEC	10
WHAT WE OFFER	12
PREVIOUS PARTNERS	14
CONTACT & INFO	15

# BEST IN A NUTSHELL

Some facts and figures



Map of Europe, every dot represents a Local BEST Group

## BEST Facts

95 universities  
33 European countries  
more than 3300  
members internationally  
reaching over 1 300 000  
students combined  
93 external events last  
year

## BEST Spirit

Flexibility  
Friendship  
Learning  
Improvement  
Fun

## MISSION

### *Developing Students*

BEST helps students to achieve an **international mindset**, to reach a better understanding of cultures and societies and to develop the ability to work in culturally diverse environments. BEST creates opportunities for **personal development** of students and supports them in reaching their full potential.

## VISION

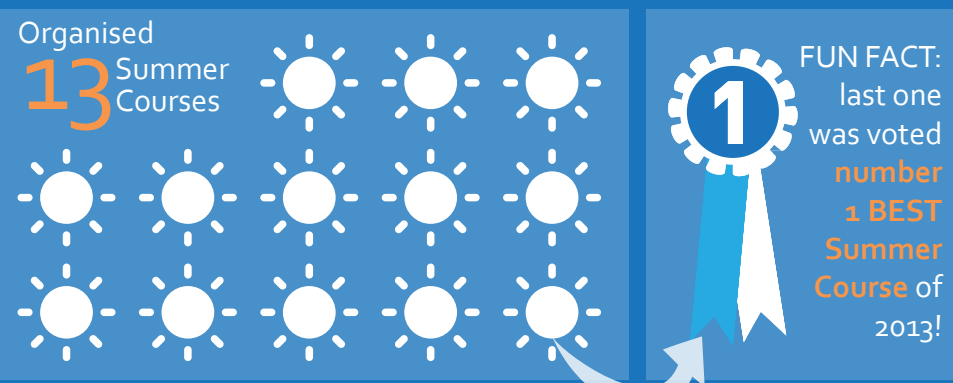
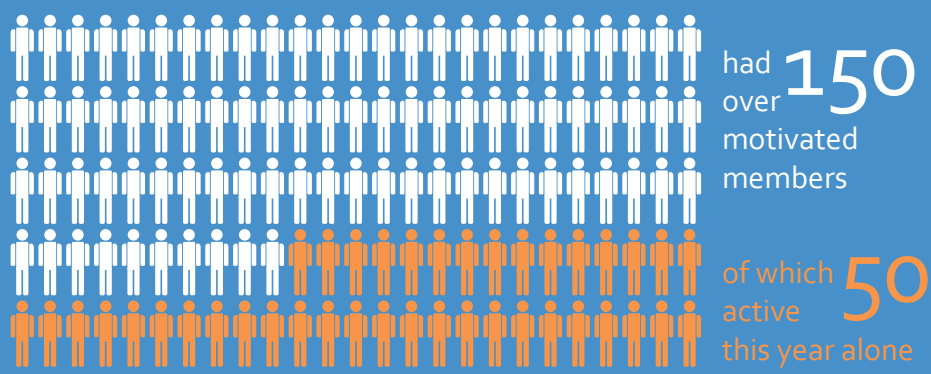
### *Empowered diversity*

People understand and respect different cultures and societies. The environment of empowered diversity supports people in applying their full potential and acting responsibly.

# BEST LEUVEN

What have we been doing?

In our 13 years of existence, we...



**Local BEST Group Leuven** (LBG Leuven) represents BEST at the Faculty of Engineering Science and Bioscience Engineering of the University of Leuven. BEST Leuven acts as a link between the engineering students in Leuven and the BEST network in Europe. It enables the students to apply for BEST Courses, to take part in the **European BEST Engineering Competition** and receive career support. In July, LBG Leuven also organises a **Summer Course**. We believe that cooperation between BEST and your company can enhance the quality of our events and offer many opportunities to your company. Hence we invite you through this booklet to become EBEC Case Study Partner or Year Partner of BEST Leuven.



# THE DEAN TALKS

A view from the University

In the last decade the **level of internationalisation** at our Faculty of Engineering Science is **steadily increasing**: both the academic staff and the (master) students are more and more coming from different countries worldwide. Our students are participating at many initiatives which allows them to experience different education systems and cultures both abroad and at our home university. The **key actors in this process are the students**. They have to take the initiative, they have to take decisions about when and where they are going. We as faculty have to create sufficient opportunities, we have to integrate these activities in the curriculum, we have to guarantee the high quality of these exchanges. And here starts the partnership between the student community and the faculty: together we are responsible to create the best boundary conditions. It deals not only with correct ECTS credit transfer, but also with human factors and interactions.

We are very happy that the local Board of Students of Technology (BEST) is **taking a leading role** in this complex process. Indeed, BEST Leuven is one of the strong chains of the European BEST organisation. Every

year they are not only **organising exciting Summer Courses** in Leuven for European students, not only sending engineering students from our faculty to Summer Courses all over Europe, they are **all year round actively engaged** in supporting different types of internationalisation events, such as the welcome and the local guidance of international students participating at Athens courses. **It is great to have such a team that complements the efforts of the faculty**. And BEST is more and more the partner in the ongoing discussions on engineering education. As an example, BEST was a full partner of the organisation the SEFI International Conference 1973 > 2013 >> Engineering Fast Forward, held in Leuven (September 2013).

To conclude, I can firmly state that we are grateful for all efforts done by the BEST organisation which perfectly fit in our strategy to integrate internationalisation in our education plan for engineering students.

## Ludo Froyen

Former Dean of the Faculty of Engineering Science

Organiser of the SEFI Annual Conference September 2013



# TESTIMONIAL

A word from a previous Partner

EnergyVille is a cooperation between the Flemish research institutes KU Leuven, VITO and imec. We work together on the research topics 'sustainable energy' and 'intelligent energy systems'. Our researchers deliver expertise to industry and cities on energy efficient buildings and intelligent networks such as smart grids, advanced district heating and cooling networks.

Striving to become one of the top five European institutes in innovative energy research, our centre is embedded in big national and international networks such as KIC InnoEnergy, Global Smart Grids Federation and Smart Grids Flanders. We are on the crossroad of research, development, training and innovative industrial activities and work in **close collaboration** with local, regional and international partners, starting **with the students**.

In the past the **partnership between BEST Leuven and EnergyVille** offered many occasions for students to tighten the 'student-company-university' triangle. We for instance present the BEST students our newest evolutions in some of the most advanced energy research topics, such as energy markets, power electronics and thermal systems. They also get insight into some of our projects, like Linear, a large-scale real-life project on smart grids. And then there is also the possibility for students to visit the EnergyVille labs.

In order to create a new energy economy there is a need for skilled and trained entrepreneurs in the energy field. EnergyVille takes on this challenge by performing a leading role in the KIC InnoEnergy Education branch. Our 'Master in Engineering: Energy' trains young technical engineers so they can lead and direct the energy transition. For this training we work in **close cooperation with ... BEST international**.

BEST, the student organisation that pushes its member students to be entrepreneurial from the start of their education, has goals that fit seamlessly to ours. Together we can train young technical engineers so later they can lead the energy transition we are facing. **We are proud to have BEST as our partner.**

Bert Gysen - VITO EnergyVille





# EBEC

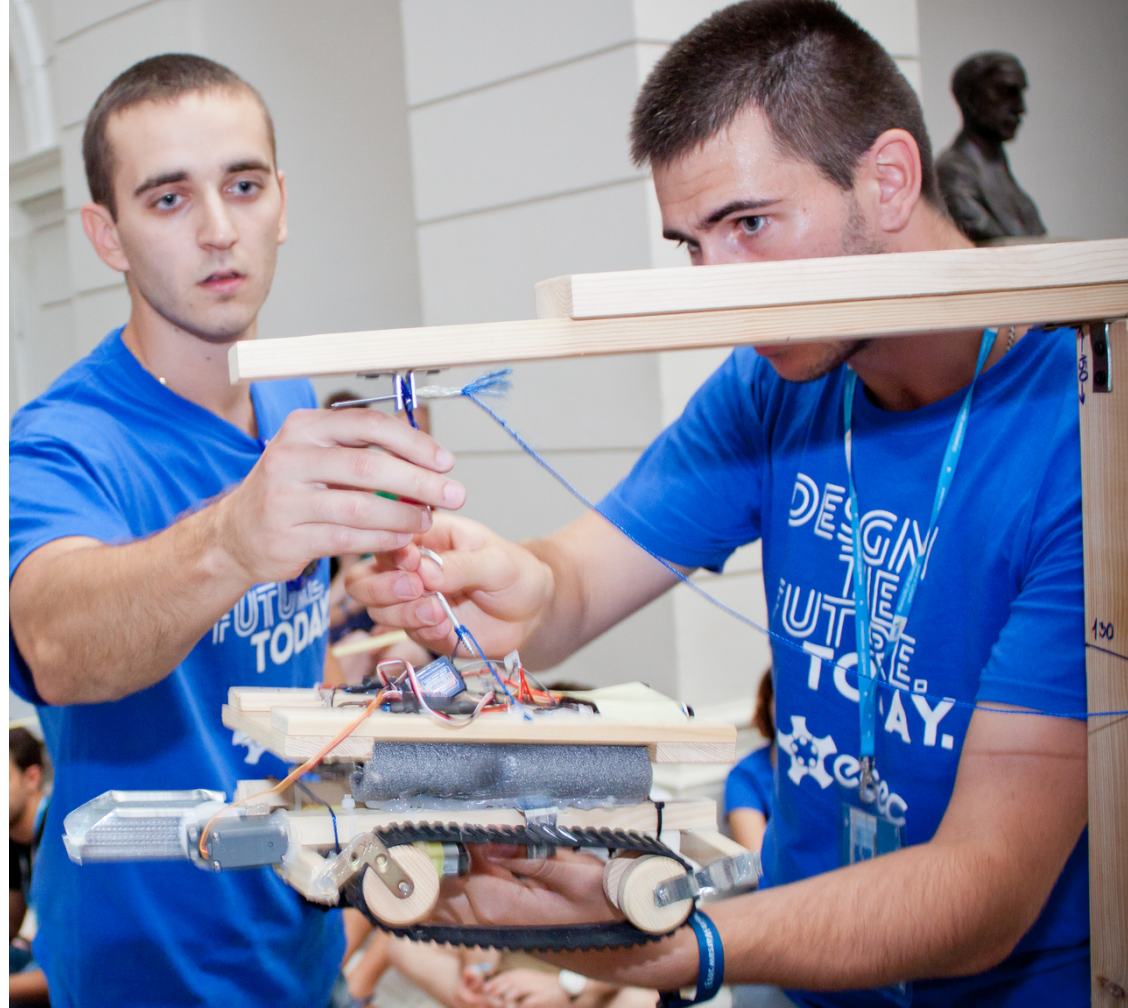
European BEST Engineering Competition

## Local Round (March 8, 2014)

The European BEST Engineering Competition (EBEC), is an international competition, which is the biggest engineering competition in Europe, and has been organised by BEST since 2009. EBEC is held in **three stages: a local round, a regional round and a final round**. BEST Leuven has been organising the local round from the very beginning.



EBEC gives students the opportunity to use their theoretical knowledge gained at the university, by being challenged to solve interdisciplinary tasks in practice. In this way we make sure that EBEC is a project that **targets all engineering students**, no matter what their subfield of study or specialisation is. We are able to offer them quality content that will help develop themselves in an international environment. Practically, **over 100 engineering students** will be competing for a place in the next round.



## Case Study and Team Design

The **Case Study** deals with a **theoretical problem in the field of technology or management** presented to participants to solve in their own specific way. After several hours of work, the solutions of the problems are presented. **Companies have a chance to offer a real problem for students to solve**, and a jury composed of company representatives and professors decides on the winner.

**Team Design** is a category in which students construct a device, within a given time, from provided materials, in order to **achieve a predefined action using their knowledge and creativity**.

# WHAT WE OFFER

What can you expect from us?

## EBEC Case Study Partner €1550

Become our Case Study partner for the local EBEC round and make a long lasting impression on the participating students!

- **The exclusive Case Study partner**

As the Case Study partner, you can decide upon the problem to be solved by the students. This gives you the opportunity to let them connect to challenges your company tackles on a daily basis.

- **List of participants and contact details**

- **Company Presentation**

Have a speaker represent your company for the participants.

- **EBEC promotion materials**

Your logo put on the local EBEC website and in the presentations promoting EBEC to students during lecture visits. Your promotion materials in the goodie bag for participants.

- **Website of BEST Leuven**

Your logo with link on the official website of BEST Leuven that is linked by both the Faculty of Engineering Science and the student union VTK, and is frequently visited by both local and international students: [www.bestleuven.eu](http://www.bestleuven.eu).

- **Jury representation**

Be represented in the jury that scores the participating teams and announces the winners.

- **Choose the prizes for winning teams**

## Year Partner

€1350

Furthermore BEST Leuven offers you the following possibilities to display your company to Europe's Engineering students.

- **BEST Leuven website**

Your logo on the official website of BEST Leuven that is linked by both the Faculty of Engineering Science and the student union VTK, and is frequently visited by both local and international students: [www.bestleuven.eu](http://www.bestleuven.eu).

- **Summer Course:**

Your logo on the promotional website that is visited by thousands of students when selecting a Summer Course. Your logo on the Summer Course T-shirts and your promotion materials in the welcome package for participants.

- **Local EBEC:**

Your logo put on the local EBEC website and in the presentations promoting EBEC to students during lecture visits. Your promotion materials in the goodie bag for participants.

- **Contact Evening**

We want to build an even stronger connection between your company and BEST Leuven and therefore we arrange a contact evening each year. This way we get to know you even better and are able to see how it is to work in your company. On these evenings you can meet all the members of our Local BEST Group.

- **Duration**

This package is for a partnership of 1 year.

Of course we are open to any of your company's suggestions regarding these offers.

# PREVIOUS PARTNERS

BEST Leuven recently teamed up with, among others:



**TOTAL**



**PHILIPS**

**SIEMENS**



Smart solutions.  
Strong relationships.



# CONTACT & INFO

Who to reach?

If you want more information or if you have any questions,  
please don't hesitate to contact us:

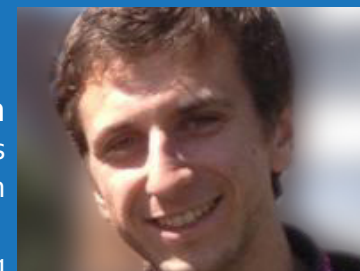
**Laurens de Smedt**  
President  
BEST Leuven

[laurens.de.smedt@best.eu.org](mailto:laurens.de.smedt@best.eu.org)



**Tomas Van Pottelbergh**  
VP Corporate Relations  
BEST Leuven

[tomas.van.pottelbergh@best.eu.org](mailto:tomas.van.pottelbergh@best.eu.org)



Or visit our website:  
**BEST Leuven**  
[www.bestleuven.eu](http://www.bestleuven.eu)

**BEST International**  
[www.best.eu.org](http://www.best.eu.org)



